

Performance Etiquette

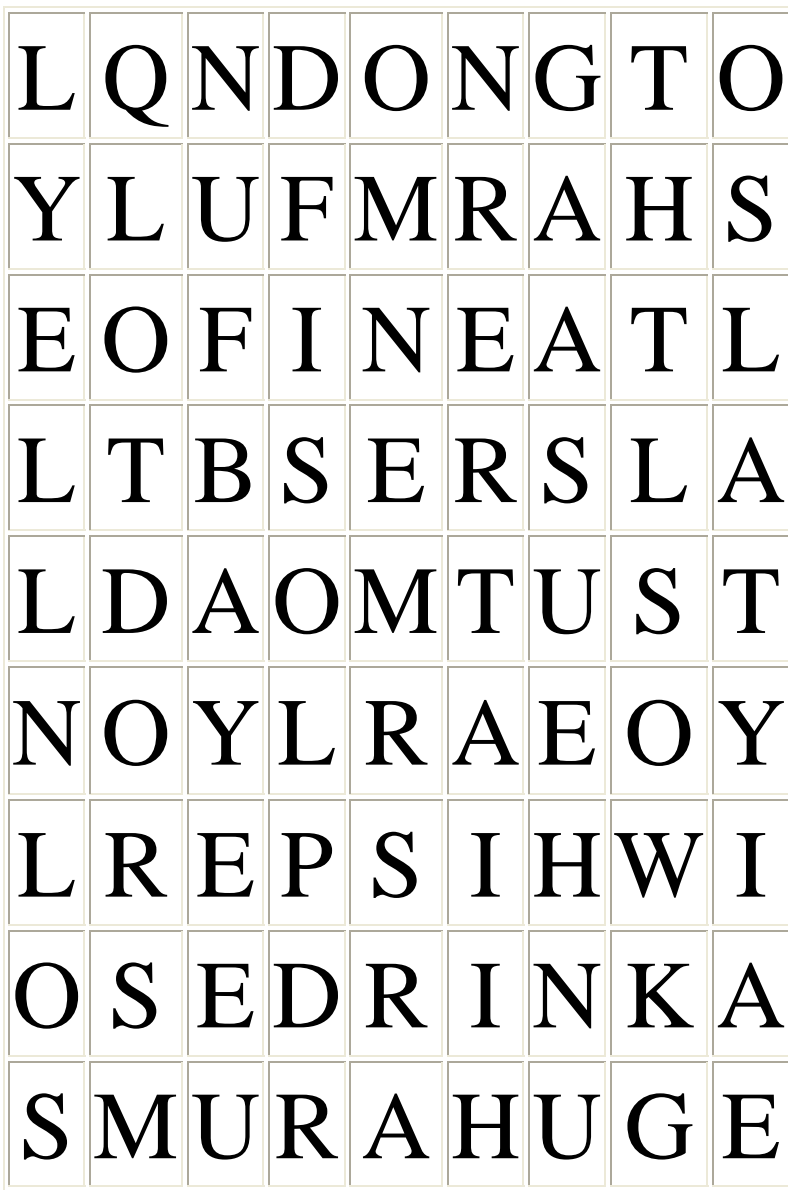
BalletMet dancers as well as audience members have expected ways of behaving or acting called etiquette. Except in cases of extreme injury, dancers' work very hard to perform exciting choreography no matter what occurs in the audience or on the stage. The audience is an important part of the show, creating a partnership with the dancers. Dancers love to know that the audience is enjoying themselves, so it is quite exciting to hear the audience clapping at appropriate times during the performance. In order for the dancers to present their hard work it is important for audience members to remember a few simple rules of etiquette.

1. Arriving early and on time is very important and courteous. Late seating is sometimes not allowed.
2. Come dressed in casual but neat clothing. Although dressing up can be more fun!
3. Make sure to use the restroom before the performance begins; it is improper to leave the theatre once the curtain rises.
4. Talking should cease once the program begins, including whispering.
5. Cell phones should be turned off before the performance begins. Use of cell phones is not allowed.
6. Food and drink are not permitted in the theatre.
7. Clapping is welcome when the conductor enters, at the end of each piece, at some exciting moments during the performance, and of course at the finale!
8. Cheering and/or booing are unacceptable at any performance.
9. Taking pictures with cameras and/or camera phones can be harmful to the dancers. Videotaping is not allowed as well.
10. Most importantly ENJOY the experience!!

Before the performance it might also be fun to:

1. Check out BalletMet's timeline on the BalletMet website.
2. Learn about those who will be dancing in the performance by reading their biographies on the BalletMet website or by reading the program given at the performance.
3. Study about the ballet that you plan to see.
4. Read the *BalletNotes* on the BalletMet website and look at books related to dance and ballet!

For more information please visit www.balletmet.org!



Performance Etiquette

By: Brittany Strine:
BalletMet Education Intern, 2009

Find all of the words related to what you should and should not do during a performance. Highlight the things you should do in one color and the things you should not do in another!

Please refer to the Performance Etiquette Guide if necessary.

Word Bank

Whisper	Harmless	Neat	Drink
Late	Fun	Loud	Yell
Harmful	Early	Messy	Eat
Off	Quiet	On	Boring